

STATE of the UNION

A stylized graphic of the American flag, featuring a blue field with white stars and red and white horizontal stripes.

POVERTY

H. Luke Shaefer
University of Michigan



POVERTY SOLUTIONS
UNIVERSITY OF MICHIGAN



FINDING NEW WAYS TO PREVENT AND ALLEVIATE POVERTY

IN MICHIGAN, THE NATION AND THE WORLD



POVERTY SOLUTIONS
UNIVERSITY OF MICHIGAN

Women, Men and Poverty

H. Luke Shaefer

Associate Professor of Social Work and Public Policy

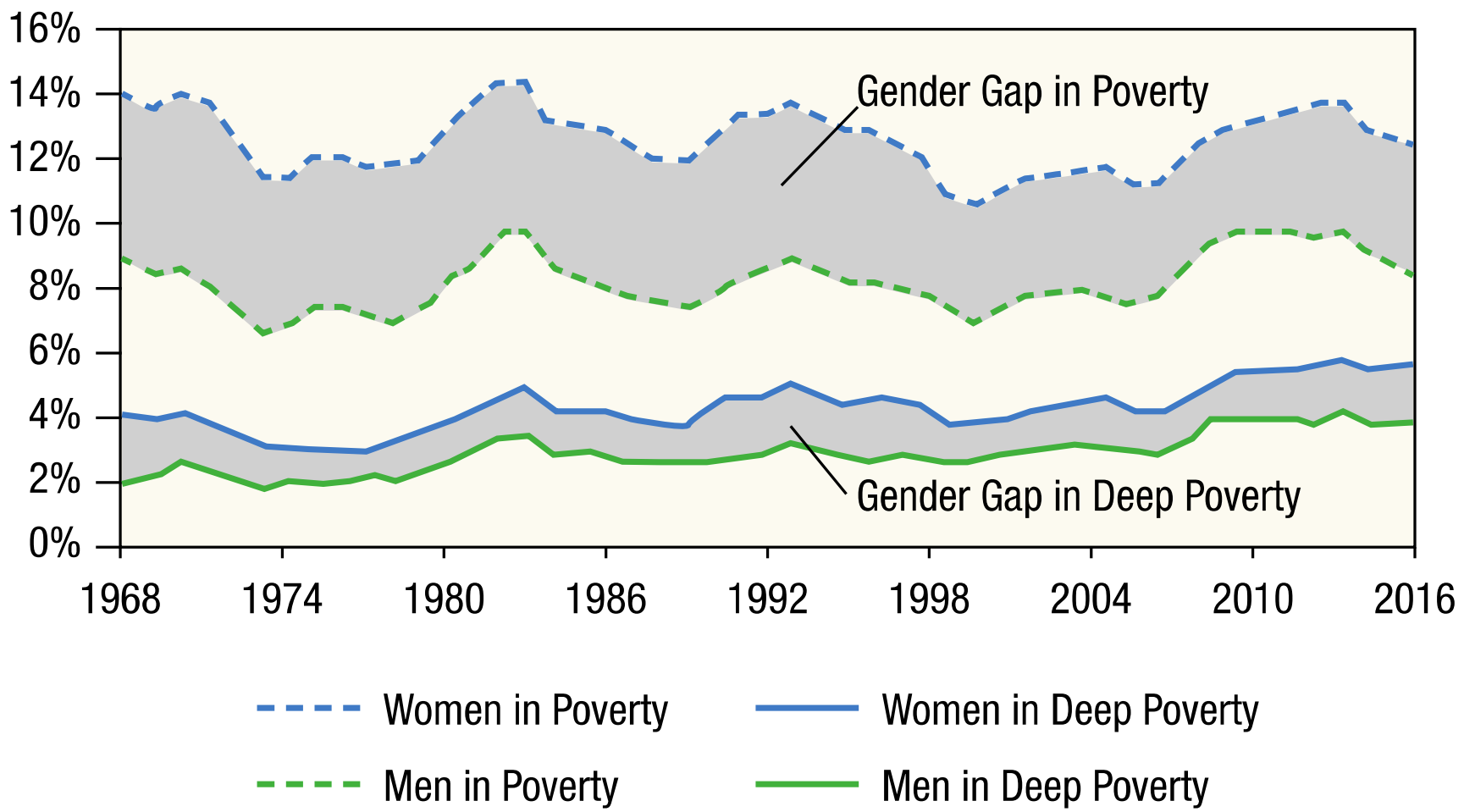
Director of Poverty Solutions

University of Michigan

Co-authored with Beth Mattingly

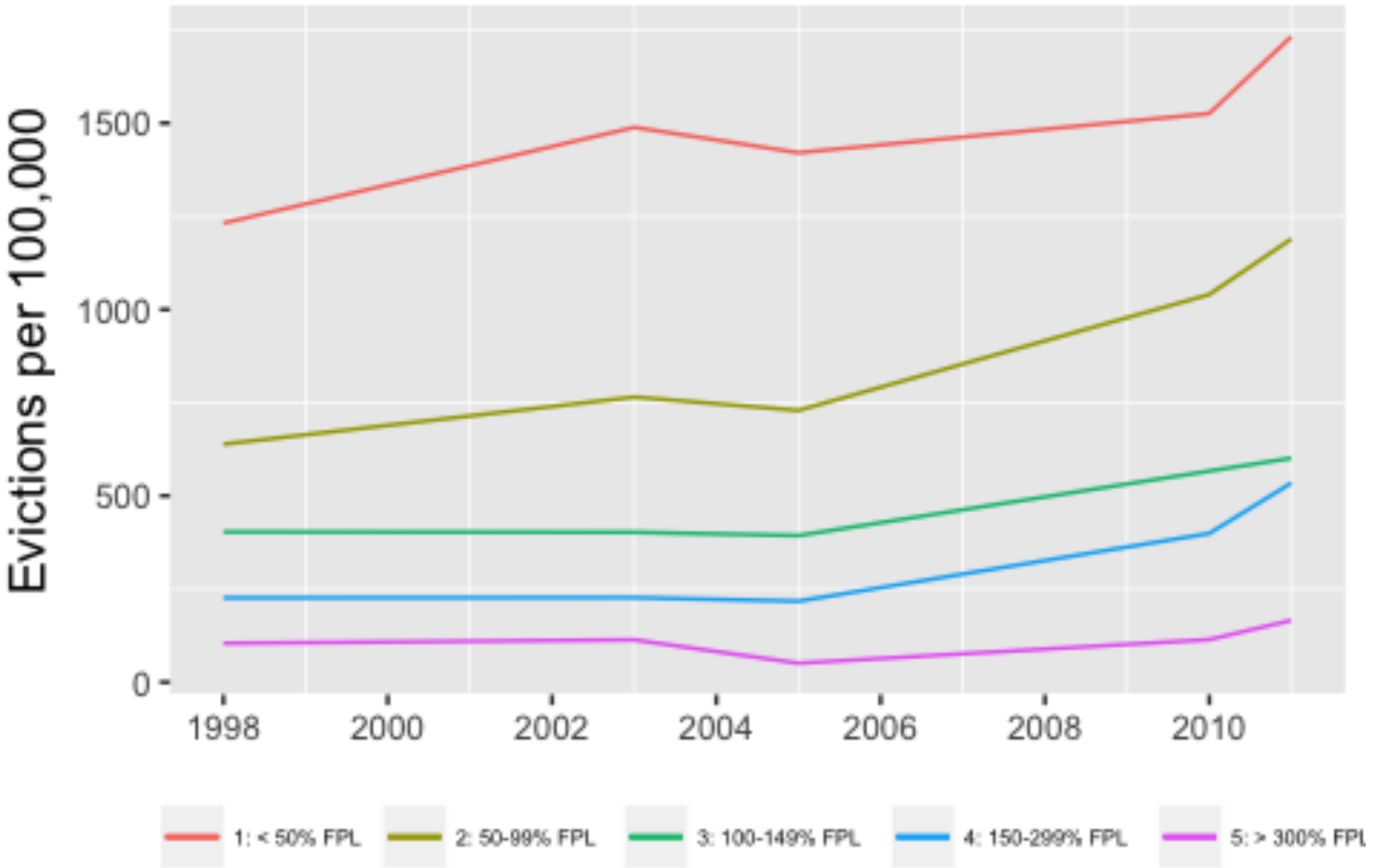
and Kathryn Edin

FIGURE 1. Poverty and Deep Poverty by Gender, 1968–2016



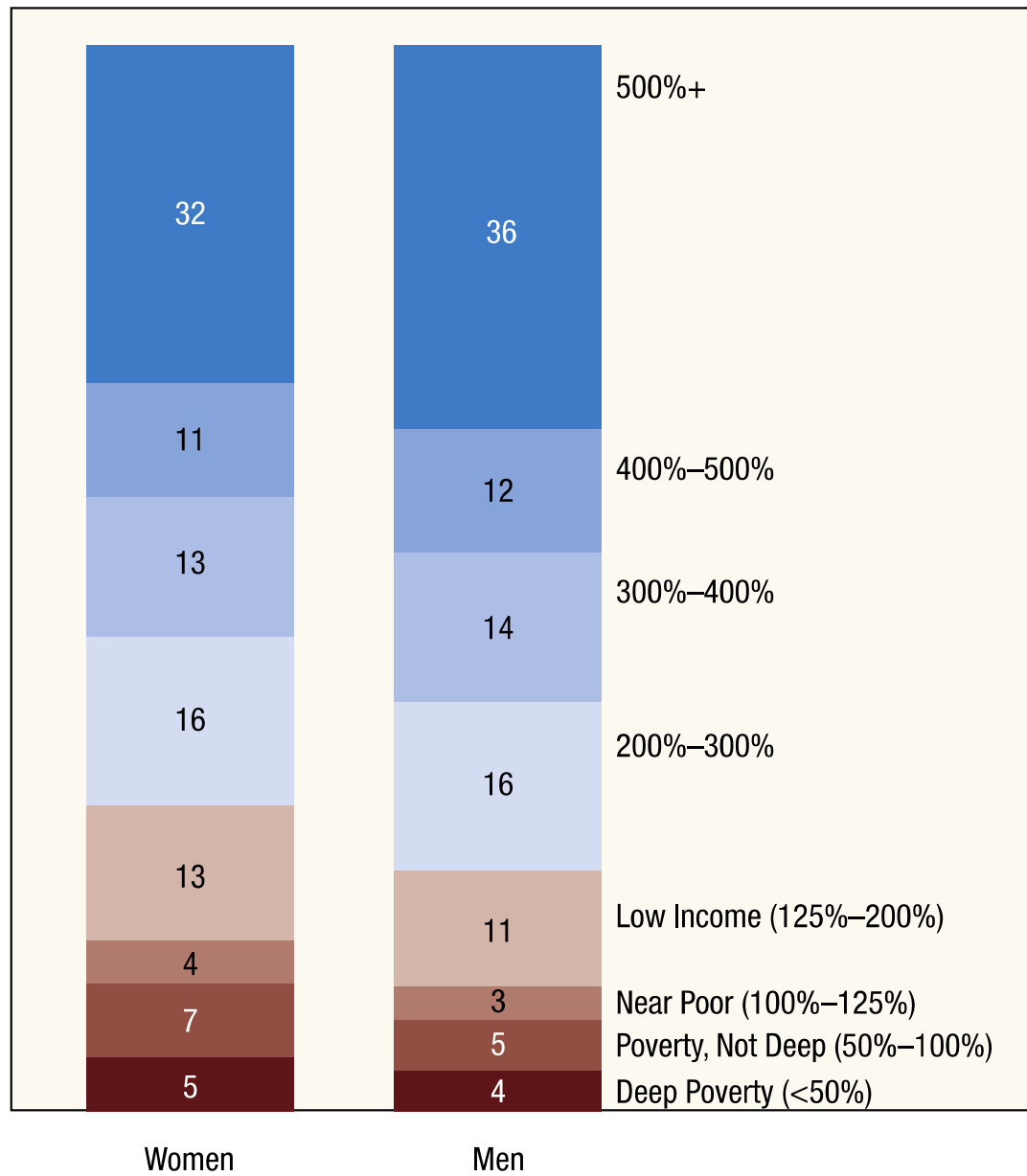
Note: Limited to those aged 25 years and older. Estimates are unweighted because of historical changes in weight construction.

Risk of eviction is graded by income in the SIPP



Analysis by Sam Dickman, MD, Department of Medicine, San Francisco General Hospital, UCSF

FIGURE 2. Poverty Level by Gender, 2016



An artifact of measurement?

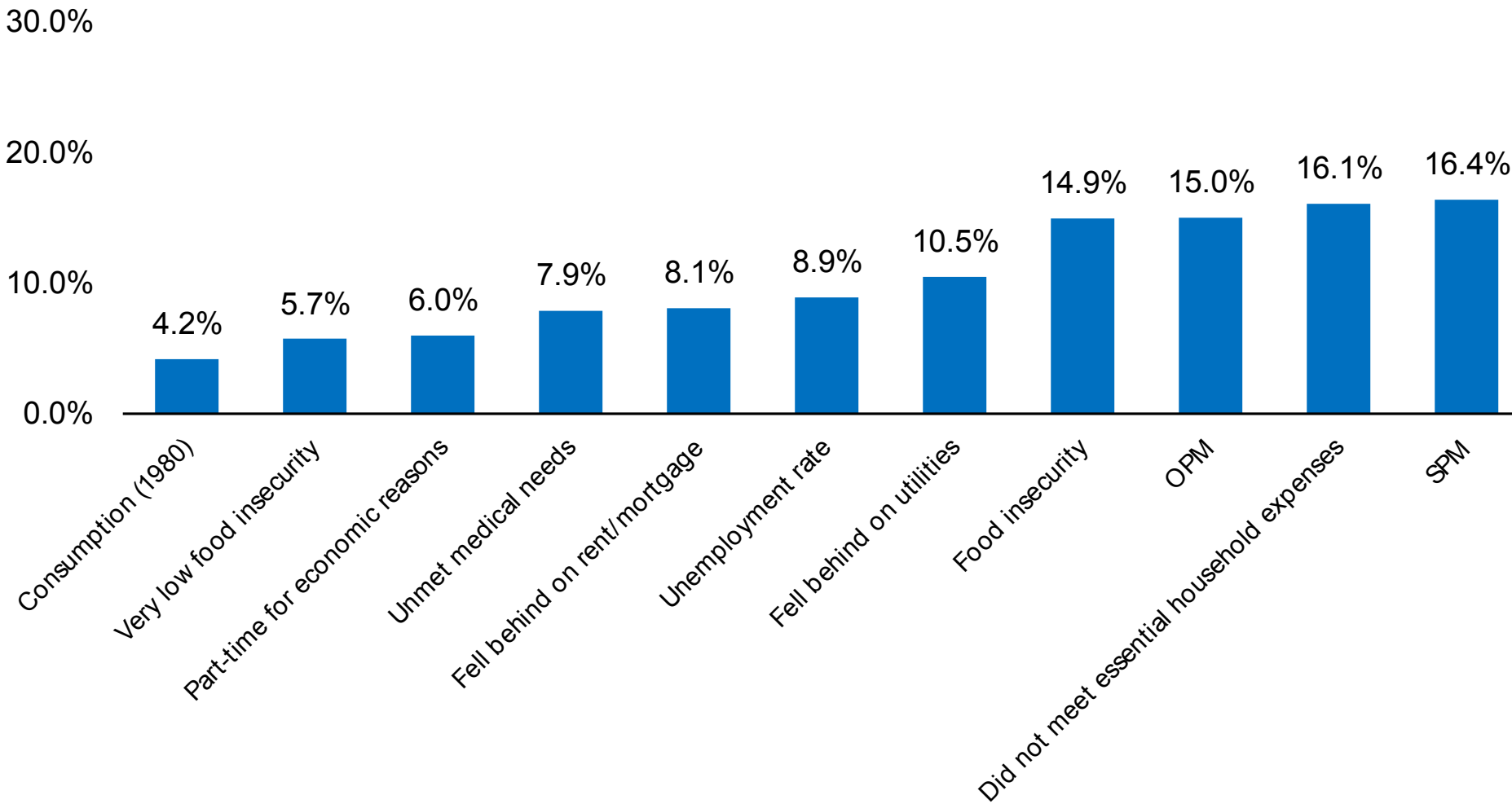
TABLE 1. Measures of Economic Need by Gender, 2016

	Women	Men
Official Poverty Measure	12.1	8.6
Supplemental Poverty Measure	13.9	11.7

- OPM and SPM both find that women have higher rates of poverty than men
- But SPM narrows the disparity
- Does SPM get it right?

Material Hardship as External Validation

Figure 1 Levels of Poverty and Hardship in 2011



Official poverty and supplemental poverty rates are in line with the rates of core metrics of material hardship

TABLE 1. Measures of Economic Need by Gender, 2016

	Women	Men
Official Poverty Measure	12.1	8.6
Supplemental Poverty Measure	13.9	11.7
Food Insecurity	11.1	9.6

Note: Limited to those aged 25 years and older. Food insecurity includes those who reported low or very low food security. Analyses are weighted to adjust for sampling.

- **Relative to men, women report:**
- about 1.4 times the rate of poverty by OPM
- almost 1.2 times the rate of SPM, and
- a bit less than 1.2 times the rate of household food insecurity



- **Adult women report higher rates of poverty and hardship than men**
- This holds true by:
 - Deep poverty, overall poverty, and near poverty;
 - by the official and supplemental poverty measure—**although SPM narrows the disparity**
 - and by household food insecurity, which finds food hardship rates in line with SPM
- Stratifying by other characteristics such as race would likely offer a more nuanced story
- And it is unclear how the story might change if the institutionalized population was added



POVERTY SOLUTIONS
UNIVERSITY OF MICHIGAN

poverty.umich.edu

H.Luke Shaefer, Director
Lshaefer@umich.edu

734.936.5065